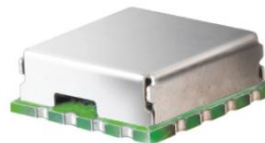


Features

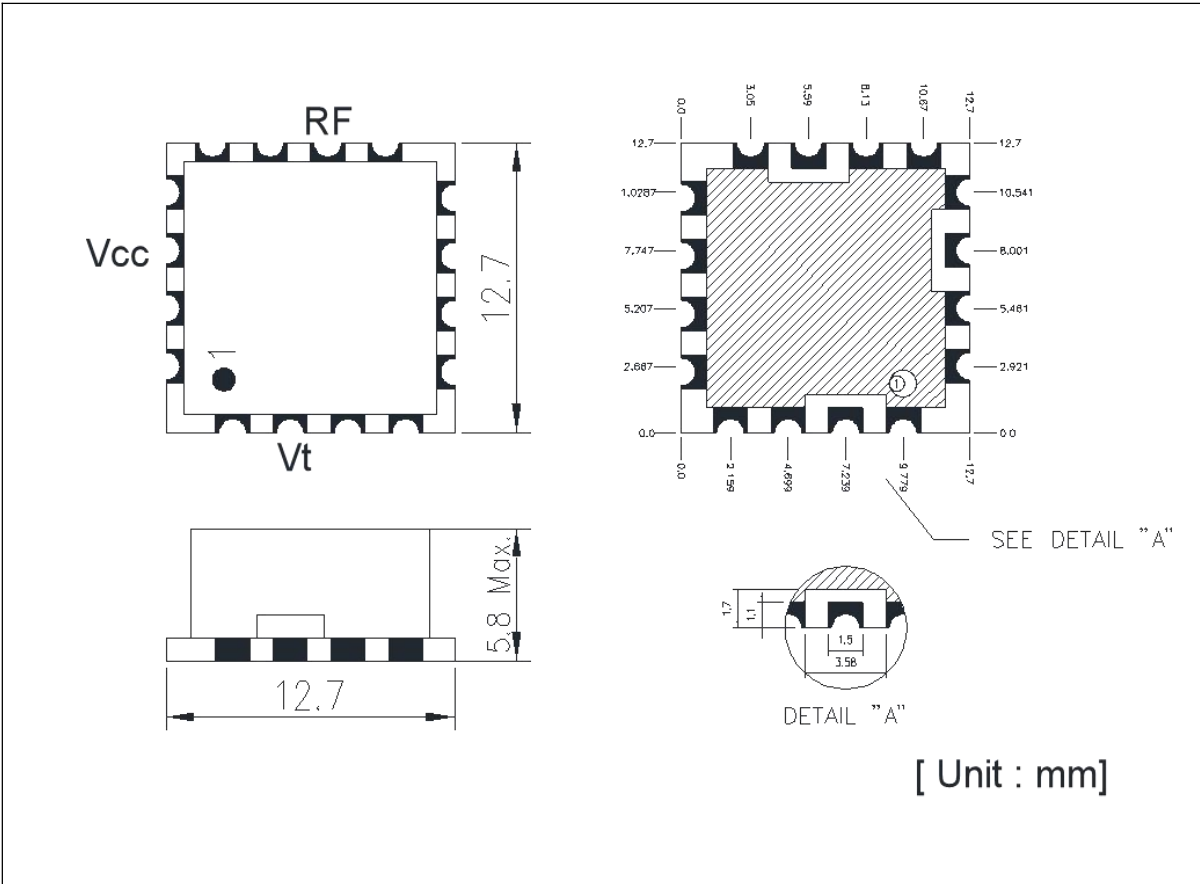
- Hybrid Integrated Circuit
- Surface Mounted Device Type
- Shield Case: Nickel Silver
- 16 PIN Type
- Customization Available Upon Request



Electrical Specifications (TA=+25°C, 50Ω System)

| No | Item | Unit | Value |
|----|------------------------------------|--------|-------------|
| 1 | Operating Frequency Range | MHz | 2075 ~ 2125 |
| 2 | Output Power Level | dBm | +3 ± 2 |
| 3 | Harmonics Level (2 nd) | dBc | -20 |
| 4 | Spurious Level | dBc | -85 |
| 5 | Phase Noise | | |
| | at offset @ 1kHz | dBc/Hz | -70 |
| | at offset @ 10kHz | dBc/Hz | -102 |
| | at offset @ 100kHz | dBc/Hz | -120 |
| | at offset @ 1000kHz | dBc/Hz | -140 |
| 6 | Load Impedance | Ω | 50 |
| 7 | Input Capacitance | pF | 27 |
| 8 | Tuning Voltage | V | +0.5 ~ +5.0 |
| 9 | Tuning Sensitivity (Typ.) | MHz/V | 30 |
| 10 | Supply Voltage | Vdc | +5±0.25 |
| 11 | Current Consumption (Typ.) | mA | 25 |
| 12 | Pushing | MHz/V | < 1.0 |
| 13 | Pulling (VSWR = 1.5 : 1 All phase) | MHz | < 1.5 |
| 14 | 3dB Modulation Bandwidth. | MHz | 40 Typ. |
| 15 | Operating Temp. Range | °C | -40 ~ +85 |

Dimensions

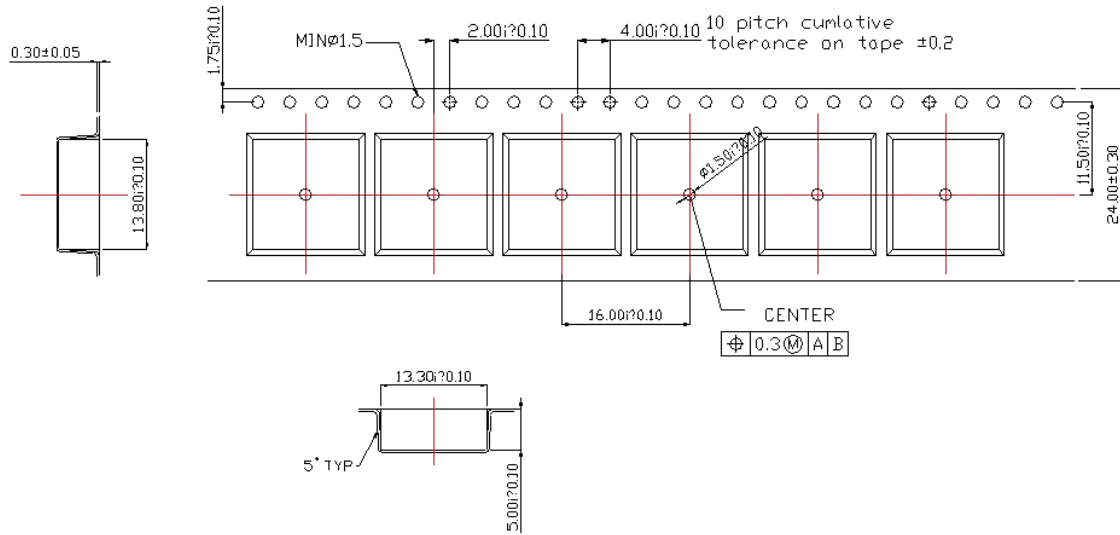


Lot-No.
0 0 0 0

Day code
Month code
Year code

| Terminal Connection | |
|---------------------------|-----------------|
| Pin NO | Terminal NAME |
| 2 | Control Voltage |
| 10 | RF Output |
| 14 | Power Supply |
| All Other Pins are Ground | |

Packing



Taping and Reel

